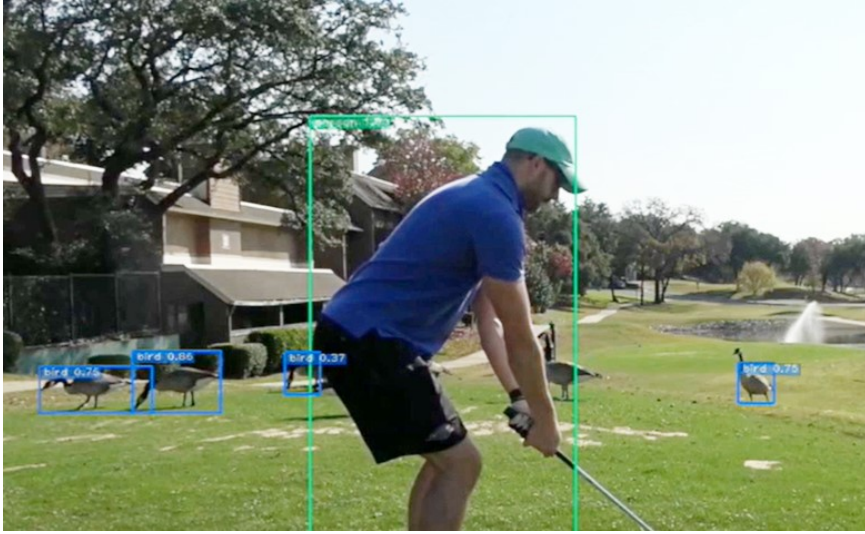


# The Smart, Humane, and Selective Way to Solve Your Goose Problem



The patented\* XD units use artificial intelligence to identify the geese while creating a “safe zone” around the golfer.



Heavy traffic on a nearby road did not trouble this flock of geese, but the XD2 deterrent system was able to lock in on them and, with its green laser deterrent, clear the field in just a few minutes.

**Animal Deterrent Solutions has both the XD1 (water deterrent) and XD2 (laser deterrent) prototypes in trial right now. Both are safe and effective at deterring geese and other flocking birds. Our plan is to have fully operational units on offer during 2024. These AI-powered units will be customizable for your layout with power and service options available.**

Geese and other flocking birds are a virtual plague on golf courses across North America. These birds damage greens and fairways, pollute waterways, and *frustrate* golfers. The total cost is in the millions and the golfing experience suffers tremendously.

Until now, solutions have been patchwork and usually temporary.

- Workers can scare them off, but that is an expensive use of scarce labor.
- Dogs can be deployed, but once the dogs depart, the geese return.
- Motion-sensor based deterrents can be accidentally activated by non-targets like wind, rain, humans, and other triggers.
- Passive deterrents are outsmarted. Decoys, scarecrows, mirrors, and always-on lights lose efficacy over time as species adapt.

But finally there is an answer. The XD deterrent systems incorporate connected AI technology to detect and deter these pests. They defend your course, save you money, protect the environment, and provide a superior golfing experience.

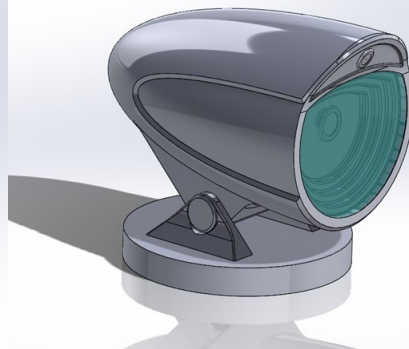
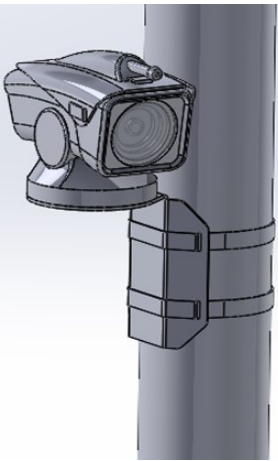
**ANIMAL  
DETERRENT  
SOLUTIONS**  
AI-POWERED. HUMANE. SELECTIVE.

\*This technology is covered by patent nos. 11,793,190, 11,369,106 and patents pending.



# ANIMAL DETERRENT SOLUTIONS

AI-POWERED. HUMANE. SELECTIVE.



XD units will come with a variety of deterrent methods, various deployments systems, and customizable service and support options.



In addition to on-course deployment, XD units can be used in facility parking lots, docks and marinas, and in a variety of recreational settings including biking and walking trails, park grounds, and sports fields. Geese aren't your problem? XD units are proven to identify more than 47 different species.